

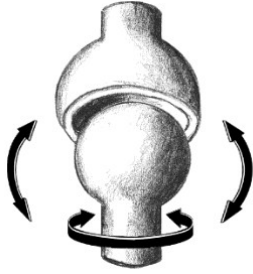
## Skeletal System & Joints

### Multiple Choice

Identify the choice that best completes the statement or answers the question.

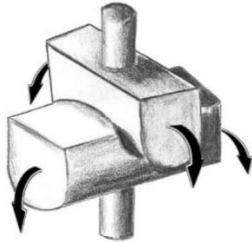
- \_\_\_\_\_ 1. Which is a section of the skeleton that includes the vertebral column and ribs?
- appendicular
  - abdominal
  - axial
  - pectoral girdle
- \_\_\_\_\_ 2. What type of joint contains a joint cavity?
- cartilaginous
  - symphysis
  - fibrous
  - synovial
- \_\_\_\_\_ 3. A hinge joint allows which movements?
- flexion and extension
  - medial and lateral rotation
  - adduction and abduction
  - depression and elevation
- \_\_\_\_\_ 4. Which type of joint is capable of movement in every plane?
- ellipsoid
  - ball-and-socket
  - gliding
  - pivot
- \_\_\_\_\_ 5. What type of joint is found at the wrist (radiocarpal)?
- ball-and-socket
  - pivot
  - ellipsoid
  - hinge
- \_\_\_\_\_ 6. What type of joint is found between the carpals as well as the tarsals?
- ellipsoid
  - saddle
  - hinge
  - gliding
- \_\_\_\_\_ 7. The articulation between the trapezium and the first metacarpal of the thumb is an example of what type of joint?
- gliding
  - saddle
  - hinge
  - pivot

*Please identify the type of joint.*



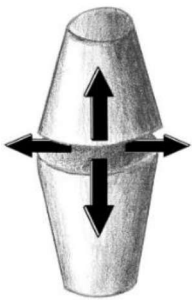
11. \_\_\_\_\_

*Please identify the type of joint.*



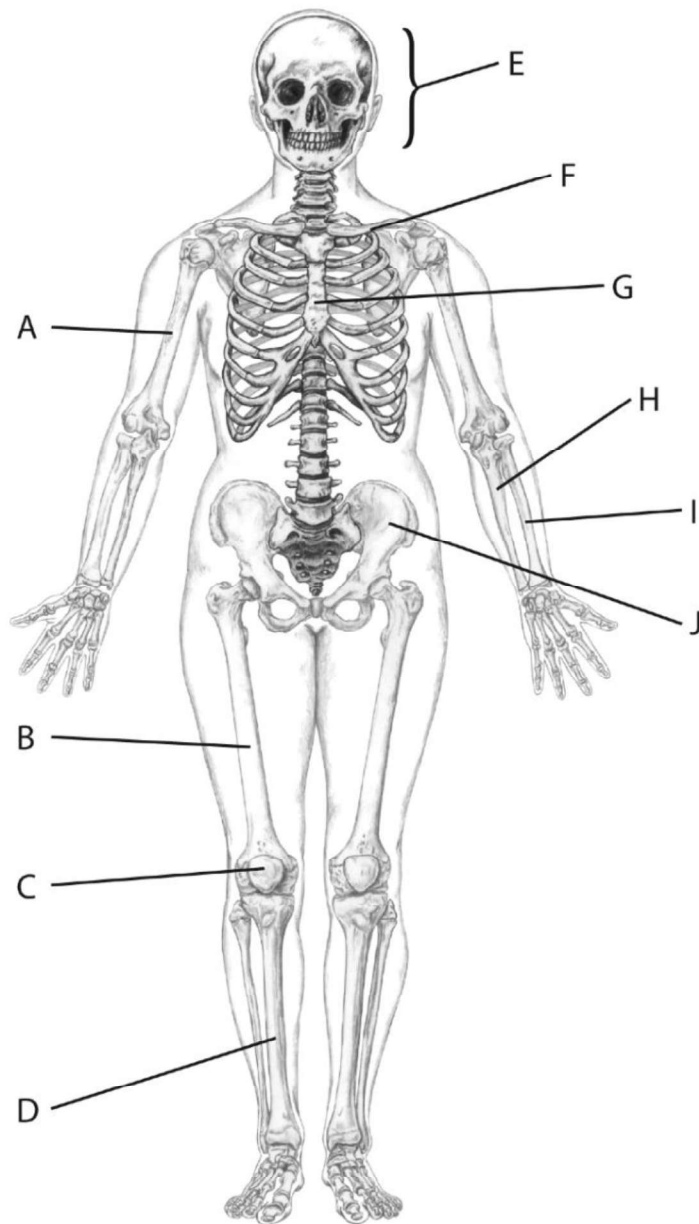
12. \_\_\_\_\_

*Please identify the type of joint.*



13. \_\_\_\_\_

Please identify the following structure(s).



14. A

15. B

16. C

17. D

18. E